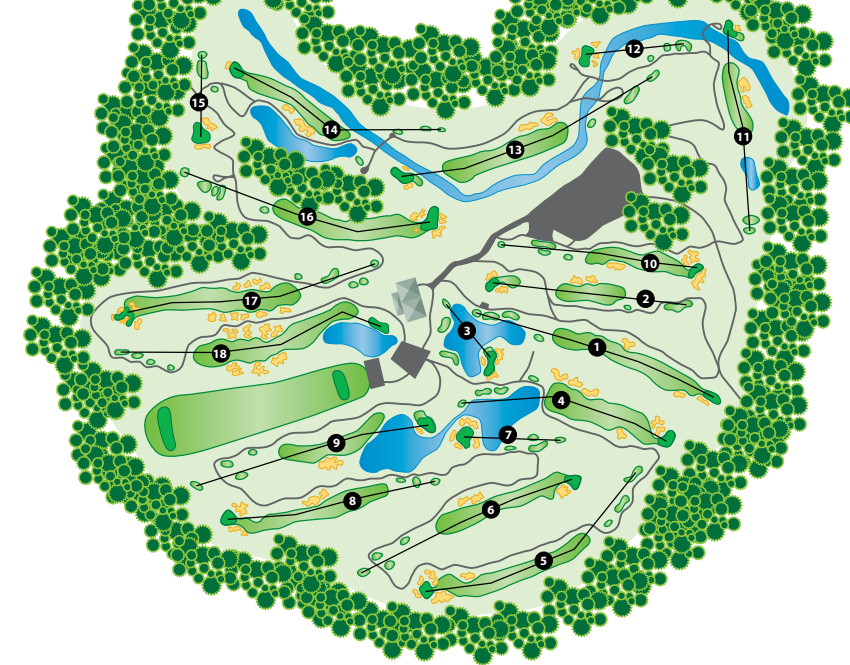
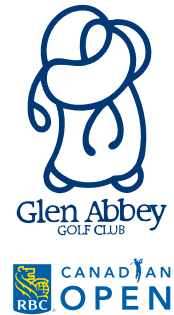


Hole	1	2	3	4	5	6	7	8	9	Out	Player	10	11	12	13	14	15	16	17	18	In	Total		
Black	502	414	156	417	527	437	197	433	458	3541			443	452	205	558	457	141	516	436	524	3732	7273	
Gold	483	393	123	379	504	406	142	391	408	3229		375	439	187	529	367	122	494	396	484	3393	6622		
Blue	460	380	123	345	452	395	135	391	383	3064		369	435	152	481	330	115	452	365	461	3160	6224		
Men's Handicap	15	1	13	9	17	5	11	7	3			10	2	8	12	4	18	14	6	16			HDCP	Net
Par	5	4	3	4	5	4	3	4	4	36		4	4	3	5	4	3	5	4	5	37	73		
Green	460	288	123	345	452	347	135	358	354	2852		369	362	152	415	325	115	353	365	429	2885	5747		
Red	389	288	95	271	411	347	94	358	354	2607		329	362	118	415	325	104	353	304	429	2739	5346		
Ladies' Handicap	5	9	13	7	15	3	11	17	1			14	4	10	6	18	16	12	8	2				



Scorer: _____
 Attested: _____
 Date: _____

	Men's Rating	Slope	Ladies' Rating	Slope
Black	74.7	132	Blue	75.3 135
Gold	72.2	127	Green	73.6 132
Blue	70.6	123	Red	70.4 125

PIN POSITIONS

Front - Red Middle - White Back - Blue
All yardage indicators are to centre of green

ALCOHOL POLICY

Members and guests are strictly prohibited from bringing their own alcohol onto a ClubLink property in accordance with all applicable liquor licensing regulations. ClubLink's Responsible Alcohol Service policy is posted at each alcohol service location and available for review. All alcohol service staff are fully trained in the proper alcohol service techniques and are supported by management while doing so. Any violation of these policies may result in suspension or termination of membership.

LOCAL RULES

RCGA Rules Govern All Play

- Water Hazards - Yellow Stakes
- Lateral Hazards - Red Stakes
- Out of Bounds - Defined by White Stakes and Boundary Fences

Please replace your divots. If that is not possible, fill your divot with the sand/seed mixture provided. Rake tracks in bunkers, keep carts on path wherever possible near tees and greens, repair ball marks on greens, and wear proper golf attire. Thanks... and good golfing!

WARNING:

LIGHTNING POSES A SERIOUS RISK!

When you suspect that there may be lightning or hear one long horn blast indicating the possibility of lightning, please immediately seek shelter in the clubhouse, other on-course buildings or automobiles. When none of the above is available, look for dense woods and low-lying areas. Avoid open areas, water, metal, wire fences, power lines and other overhead wires, isolated trees, elevated ground, maintenance machinery and golf carts. Raising umbrellas increases the risk when lightning is near. Three short horn blasts indicate it is safe to return to the course. While the golf shop will endeavor to warn you of lightning, ClubLink is not held responsible for removing Members and Guests from the course.



A SEASON FULL OF GOLF at
ClubLink's daily fee courses.
Details at playersclub.clublink.ca.



1333 Dorval Drive, Oakville, Ontario L6M 4G2
Tel: 905-844-1800 | Tee Times: 1-800-276-9542



Home of the TaylorMade Performance Lab.
Tel: 905-901-0051 | www.taylormadematt.ca

CLUBLINK
ONE MEMBERSHIP
more golf

LINKLINE: 1-800-273-5113
For ClubLink Membership information
call 1-800-661-1818 or visit www.clublink.ca



Photo: Grant Fraser

Joe Williams
A SIGNATURE GOLF COURSE